

Islip Horsemen's Association
2025 English Prize Book
June 8, August 3, August 24
Rain Date September 14



IHA English Committee

Jen Christensen: Chair- 631-987-7497

April Converse: Horse Show Secretary- 631-617-3824

Wendy Burling: Sponsors- 631-567-8743

Sheila Berman

Kym Eller

Angela Marcotrigiano

Anna Prunty

IHA ENGLISH HORSE SHOW TIME SCHEDULE

Trainer Conflicts will not be honored. Due to horse/rider conflicts, a ten-minute time limit will be enforced on holding a class. When the back number is called, the rider will have two minutes to enter the ring. Management reserves the right to assign a jumping order. There will be schooling in all rings from 7:30 to 8:30.

Ring Schedule – Start Time: 9:00 AM

Ring 1	Ring 2	Ring 3
7. Pre Spec Beg W 2pt	22. All Age Eq 2' W/T/C	40. Puddle Jumper 2'3"
8. Pre-Spec Beg W/T	23. All Age Eq 2' O/F	41. Puddle Jumper 2'3"
9. Pre Spec Beg W/T 2pt	24. All Age Eq 2' O/F	42. Puddle Jumper 2'3"
10. Spec Beg W/T	19. Maiden W/T/C	43. IHA/NES Jumper 2'6"
11. Spec Beg W/T/Poles	20. Maiden O/F 2'3"	44. IHA/NES Jumper 2'6"
12. Spec Beg W/T/C	21. Maiden O/F 2'3"	45. IHA/NES Jumper 2'6"
25. Adult Beg W/T	29. Cross Rail Htr X-Rails	49. Cindy Laskow Stakes
26. Adult Beg W/T/C	30. Cross Rail Htr X-Rails	Tentative Lunch Break
27. Adult Beg X-Rails	28. Cross Rail Htr U/S	1. Leadline W
Tentative Lunch Break	Tentative Lunch Break	2. Leadline W/T
13. Jr. Beginner W/T	32. Training Htr O/F 18" - 2'	3. Leadline W/T 2pt
14. Jr. Beginner W/T/C	33. Training Htr O/F 18" - 2'	4. Pre-walk trot: W
15. Jr. Beginner X-Rails	31. Training Htr U/S	5. Pre-walk trot: W/T
16. Jr Novice W/T	35. Schooling Htr O/F 2'-2'3"	6. Pre-walk trot: W/T/2-Point
17. Jr Novice W/T/C	36. Schooling Htr O/F 2'-2'3"	50. Child/Adult Flat: W/T
18. Jr Novice X-Rails	34. Schooling Htr U/S	51. Child/Adult Flat: W/T/C
	38. Ch/Ad Htr O/F 2'6"	52. Child/Adult Flat: Eq Pattern
	39. Ch/Ad Htr O/F 2'6"	46. Pleasure: W/T/C
	37. Ch/Ad Htr U/S	47. Bridle Path Hack
		48. Pleasure: 2 X-Rails

Entry and Show Fees

Entry Fees:

- **Pre-Entry Deadline: 9 PM Thursday before the show** (strictly enforced).
- **Payment:** Cash or checks.
 - Make checks payable to **Islip Horsemen's Association, Inc.**
 - A **\$25 handling fee** will be charged for returned checks.

How to Pre-Enter:

- **Online:** www.horsespot.net
 - **Assistance:** Text **April** at **(631) 617-3824**
- **Email:** Isliphorsemens.english@gmail.com

Class Fees:

Entry Type	Fee (Per Class)
IHA Members	\$18.00
Non-Members	\$25.00
Post Entries Members	\$25.00
Post Entries Non-Members	\$35.00

📌 **IHA Member Rebate:** Enter **five** classes with the same horse and rider combination, and receive the **sixth class FREE!** *(Not valid for post entries.)*

📌 **Rain Date Entries:** Any new entries made for a **rain date** will be considered **post entries**.

Additional Show Fees Per Show:

- **Secretary Fee:** \$15.00
- **Suffolk County Parks Fee:** \$5.00

IHA English is Proud to Announce Our Judges for 2025:

June 8

Ring 1 (Equitation): Frank Dimarsico

Ring 2 (Hunter): Joyce Przebowski

Ring 3 (Jumper): Victoria Leigh Bellina

August 3

Ring 1 (Equitation): Judy Galterio

Ring 2 (Hunter): Matt Sheridan

Ring 3 (Jumper): Connie Lacy-Rock

August 24

Ring 1 (Equitation): Leslie Woodworth

Ring 2 (Hunter): Maryelena Sarvino

Ring 3 (Jumper): Marlene McCabe

2025 English Horse Show Prizebook Rules

1. Governing Rules: Unless specified otherwise, all classes will follow the rules of the Islip Horsemen's Association (IHA). We are not a USEF-sanctioned horse show, but will revert to USEF rules in regards to conflict of class specs or horse and rider requirements (ie. tack, equipment) only.
2. Humane Treatment: No person on show grounds, including but not limited to parking areas and show arena, may treat a horse in an inhumane manner. Any person treating any animal in an inhumane manner will be asked to leave the showgrounds. No refund of any fees will be given in such an instance.
3. Entries: Pre-entries are accepted online at Horseshowing.com or by phone until 9:00 PM on the Thursday before the show date. Emailed entries must be received by this deadline. No participation is allowed without full payment of fees. All entrants must sign a release form; junior riders require a parent/guardian signature. **Anyone who pre-enters must pay all applicable entry fees unless they cancel at least 24 hours before the show start time. If a rider fails to show up and has not canceled within this window, they are still financially responsible for all fees associated with their entries. Failure to pay may result in ineligibility to participate in any future IHA events until the outstanding balance is paid in full.**
4. Refund Policy: No refunds after the closing date without a veterinarian's certificate of unsoundness or a doctor's note for the rider's inability to participate. Documentation must be submitted within 10 days. Horse substitutions are not allowed in Hunter, Jumper, or Pleasure classes.
5. Show Start Time: The show begins promptly at 9:00 AM. Refunds for class cancellations will be processed by mail.
6. Attire: Proper English attire is required. All mounted riders must wear ASTM/SEI-approved helmets. Half-chaps are not allowed. Incorrect attire will not qualify for refunds.
7. Class Adjustments: Management reserves the right to cancel, combine, divide, or move classes. Classes with fewer than three entries may be canceled or combined at the show management's discretion. Division split requests will not be considered.
8. Division Points: Riders must pay for the full division for points to count toward year-end awards.
9. Liability: All participants and spectators enter the premises and ride at their own risk. IHA, Suffolk County, and the show committee disclaim all liability for accidents or occurrences, no matter what the cause.
10. Schooling: Jumping course schooling is allowed from 7:30 to 8:45 AM and during lunch breaks, with six riders permitted on the course at one time.
11. Rider Age: A rider's age is determined as of December 1 of the previous year.
12. NYS Law: Requires that all children aged 17 and under wear ASTM/SEI-approved helmets while mounted.
13. Stallion Policy: Due to the nature of stallions near other horses, absolutely no stallions will be permitted in competition or on the show grounds during any IHA function, event, or show to ensure the safety and welfare of our exhibitors and spectators.

14. Division Eligibility: A rider's division eligibility established at their first show will remain unchanged for the entire season (January 1 to December 31). When filling a division, the rider must pay for said division for their points to count.
15. Trainer Assistance: Riders will be disqualified if a trainer enters the ring or provides verbal assistance, including coaching from the sidelines or giving instructions during a class, unless otherwise specified. Approaching a judge requires ring steward permission.
16. Equipment Restrictions: Martingales are not allowed in flat classes. Flashes are prohibited in Equitation and Hunter classes. Boots, bandages, or wraps are not allowed in Hunter divisions. Black stirrups are not permitted in Equitation classes. Refer to the IHA rulebook for further details.
17. Ring Entry: A two-minute rule to enter the ring will be enforced. Trainer conflicts will not be accommodated. Classes will not be held for more than 10 minutes due to rider/horse conflicts.
18. Year-End Awards Eligibility: Classes with fewer than three riders will not be eligible for year-end awards.
19. Awards: Each class will be awarded a first-place trophy and six ribbons. Grand and Reserve ribbons will be awarded in each division. End-of-day Junior and Adult Grand and Reserve Champion ribbons will be awarded to the high-point horse and rider of the day.
20. End of Day Tie Breaking: In the event of a tie, the rider with the most first-place wins will be ranked higher. If the first-place finishes are equal, the rider with the most second-place finishes will rank higher, and so on for subsequent places.
21. End of the Year Tie Breaking: Will be resolved in the same manner. If riders have identical finishes across all places, it is up to the committee's discretion to break it (ex., which rider scored higher in a more challenging class, fastest time in a class, etc).
22. Disputes: Disputes or questions not covered by the rules must be submitted in writing on the show day to the show management. Decisions made by management are final.
23. Amateur Eligibility: Trainers may not ride in Equitation divisions. Amateur eligibility applies to those who have not received payment for showing, judging, training, or instructing for the past five years. Therapeutic trainers are an exception.
24. Beginner Class-Eligibility: Riders competing in Novice or Open classes in other disciplines are not eligible for IHA English Beginner classes.
25. Medical Emergencies: Riders transported off the grounds by ambulance may not return to compete the same day.
26. Horse Substitutions for High Point Award: No horse swaps for division points are allowed in Jumper, Pleasure, or Hunter classes. However, if a horse becomes injured, the rider may compete on another horse for end-of-year high-point award eligibility with a valid veterinary note. Points will count toward the overall high-point award but not toward division standings.

ENGLISH END OF YEAR AWARDS REQUIREMENTS

High point awards will be given to the same horse and rider combination entered in the same Divisions in all three shows. Exhibitors must also be paid members by the end of the first show. No Exceptions.

HIGH POINT ADULT GRAND \$100.00 – Michael J Berger and Co.

HIGH POINT ADULT RESERVE \$75.00 - Mary's Pizza & Pasta

HIGH POINT JUNIOR GRAND \$100 – Bullseye Horse Transport

HIGH POINT JUNIOR RESERVE \$75.00 – The Red Barn

HIGH POINT ADULT EQUITATION - R & G Hauling

HIGH POINT JUNIOR EQUITATION Trophy Award - Elemco Software

IHA DIVISION AWARDS

To be eligible for the IHA Year End Division Awards, the rider must be an IHA member by the conclusion of the first show entered. Exhibitors must amass a minimum of 10 points, attend two of the three English shows, and compete in two of the three classes in the division to qualify for year-end division awards. See IHA Rules and Regulations for further information on Year-End Awards.

End-of-year ribbons are awarded up to sixth place. In case of conflicts with year-end awards, the resolution will be decided by the English Committee.

TRAINER AWARD

Trainers will specify one division in three categories: Equitation, Hunter, Pleasure, and/or Jumpers. Then they will choose which rider in each who will represent them before the start of the show. The same rider may be selected for any or all of the divisions. All points accumulated by the specified rider or riders in the specified divisions will be tallied over the season for the Trainer Series Award. Participating trainers must be IHA members.

END OF YEAR SADDLE REQUIREMENTS

1. Rider must compete in all 3 shows.
2. The saddle will be awarded to the Overall High Point, the same horse and rider combination.
3. Juniors and Adults are eligible.

The same rider may not win more than 2 consecutive years in a row. Should this occur, the saddle will be awarded to the rider with the second-highest number of points. The high-point rider will remain the same. Refer to the END OF YEAR requirements for more information.

Saddle Award Sponsored by IHA English Committee

VERSATILITY

Sign up today for our Most Versatile Horse Award!! Open to all IHA members who show as the same horse and rider combination in multiple disciplines. For more information & how to sign up, visit the IHA website.

Isliphorsemensassoc.com

Versatility Award



Jumper Divisions

Points are awarded to the horse regardless of the rider

PUDDLE JUMPER: NES: Open to any horse or pony. Fences 2'- 2'3".

40. Power & Speed: USEF rules apply. Time does not apply to the first portion of the class. If a horse/pony is clean, time begins as the horse/pony crosses the finish line of the 1st portion of the course.

41. Buzzer Jump Off- Riders will complete a timed first round over the designated course. If a rider completes the first round clear of faults, they must STOP and WAIT for the buzzer before beginning their jump-off. The buzzer will signal the start of the countdown, at which point the rider may proceed immediately onto the jump-off course. Failure to wait for the buzzer will result in elimination. Major faults in either round will count toward final placings. USEF rules apply.

42. Timed First Jump Off: To compete over the designated course in a time allowed. Major faults to count. USEF Rules apply.

END OF YEAR AWARD SPONSORED BY THUNDER HEARING

Cindy Laskow Memorial IHA Jumper Division

IHA / NES JUMPER: Open to any horse or pony. Fences set at 2'6" - 2'9".

43. Power & Speed –Time does not apply for the first portion of the class; if a horse/pony completes the first portion clean, the timed section begins as they cross the finish line of the first portion. USEF rules apply.

44. Buzzer Jump Off- Riders will complete a timed first round over the designated course. If a rider completes the first round clear of faults, they must STOP and WAIT for the buzzer before beginning their jump-off. The buzzer will signal the start of the countdown, at which point the rider may proceed immediately onto the jump-off course. Failure to wait for the buzzer will result in elimination. Major faults in either round will count toward final placings. USEF rules apply.

45. Timed First Jump Off – Competitors complete a designated course within the time allowed, with major faults to count. USEF rules apply.

Sponsored by Meredith Smith and Neal and Joan Greenberg

Cindy Laskow Memorial Jumper Stakes (Standalone Class) 3' - \$30 Entry Fee to go towards 100% payout

49. Timed First Jump-Off Stakes – A separate stakes class featuring a jump-off against the clock. Open to any horse or pony. Competitors complete a designated course within the time allowed, with major faults to count. USEF rules apply.

END OF YEAR AWARD SPONSORED BY MEREDITH SMITH AND NEAL & JOAN GREENBERG

HUNTER DIVISIONS

To be shown over a suitable course of hunter-type fences. Courses are to be posted on the day of the show.

Classes are to be judged on the horse's performance, soundness, manners, and consistency.

Points are awarded to the horse regardless of the rider.

TRAINING HUNTER: NES: Open to all.

- 31. Training Hunter: Under Saddle (individual canter at the judge's discretion, not to exceed 5 horses at one time)
- 32. Training Hunter: Over Fences 18"- 2' (Trotting Permitted)
- 33. Training Hunter: Over Fences 18"- 2' (Trotting Permitted)

END OF YEAR AWARDS SPONSORED BY: MARY JEAN BAKER

CROSS RAIL HUNTER: NES: Open to Jrs & Amateurs riding horses/ponies that are not entered in any other divisions at this show except Jr. Novice, Jr. Beginner & Adult Beginner. NO TRAINERS. Must be amateurs.

- 28. X-Rail Hunter: Under Saddle (no more than 7 to canter at once)
- 29. X-Rail Hunter: X-Rail Course (trotting permitted)
- 30. X-Rail Hunter: X-Rail Course (trotting permitted)

END OF YEAR AWARDS SPONSORED BY: SPEAKEASY RANCH

SCHOOLING HUNTER: NES: Open to all.

- 34. Schooling Hunter: Under Saddle
- 35. Schooling Hunter: Over Fences 2'-2'3"
- 36. Schooling Hunter: Over Fences 2'-2'3"

END OF YEAR AWARDS SPONSORED BY: R & G HAULING

CHILD / ADULT HUNTER: NES: Open to all. Not restricted by previous wins.

- 37. Ch/Ad Hunter: Under Saddle
- 38. Ch/Ad Hunter: Over Fences 2'6"
- 39. Ch/Ad Hunter: Over Fences 2'6"

END OF YEAR AWARDS SPONSORED BY: THE LITTLE RED BARN

PLEASURE DIVISION

Points are awarded to the horse regardless of the rider.

PLEASURE: Open to all except those entered in Beginner or Cross-rail Hunter classes.

46. Pleasure: Walk, Trot, Canter with light contact.

47. Bridle Path Hack: Walk, Trot Canter. May be required to hand gallop and halt.

48. Pleasure: Walk, Trot, Canter. To jump over 2 cross rails, trotting is permitted.

END OF YEAR AWARDS SPONSORED BY: MINIERI'S PARKVIEW RIDING CTR.

The bond between a rider and their horse is love
that speaks without words.

Best of Luck in 2025! *Lynn, Bob and Annmarie*



JUNIOR EQUITATION

Points are awarded to the rider regardless of the horse.

Leadline, Pre-Walk Trot, and Pre-Special Beginner are not eligible for Year End Overall High Point or Saddle Awards. This does not affect year-end Division Awards.

LEADLINE: NES: Open to riders 8 and under who have not shown in any classes requiring riders to walk, trot, and/or canter independently. Open to horses and ponies only. Riders cannot cross-enter into any other division. Sidewalkers are allowed.

1. Leadline: Walk
2. Leadline: Walk/Trot
3. Leadline: Walk/Trot/2 point at a walk

END OF YEAR AWARDS SPONSORED BY: LIL' BIT'S FARM PRE-SPECIAL

PRE-WALK TROT: Open to riders 10 and under who have not shown in any classes requiring riders to walk and trot independently. Riders are to be accompanied by an adult **off-lead**. Riders cannot cross-enter into any other division.

4. Pre-walk trot: Walk
5. Pre walk trot: Walk/Trot
6. Pre walk trot: Walk/Trot/2-Point

PRE-SPECIAL BEGINNER: NES: Open to riders 12 and under. Open to horses and ponies only. Riders cannot cross-enter into any other division. Diagonals are not to count.

7. Pre-Special: Walk/(2 point at a walk)
8. Pre-Special: Walk/Trot
9. Pre-Special: Walk/Trot/(2 point at a trot)

SPECIAL BEGINNER: NES: Open to riders under 18 who have not competed in a higher division. Riders cannot cross-enter into any other division. Leads do not count.

10. Special: Walk/Trot
11. Special: Walk/Trot & Once around over 4 trotting poles
12. Special: Walk/Trot/Individual Canter

END OF YEAR AWARDS SPONSORED BY: MICHAEL J BERGER, CPA

JR. BEGINNER: NES: Open to riders under 18 who have not competed in a higher Equitation division. Riders may only compete in this division for 2 consecutive years, regardless of points. Riders cannot cross-enter into any other division at this show except Cross Rail Hunter.

13. Jr. Beginner: Walk/Trot
14. Jr. Beginner: W/T/C (No more than 7 to canter at once)
15. Jr. Beginner: X-Rail course, consisting of 4 jumps, once around, tracking left. (trotting permitted)

END OF YEAR AWARD SPONSORED BY BULLSEYE HORSE TRANSPORT

JUNIOR NOVICE : NES: Open to riders under 18 who have pointed out of Jr. Beginner or have competed in this division for 2 consecutive years. Riders cannot cross-enter into any division at this show except Cross Rail Hunter.

16. Jr. Novice: Walk/Trot

17. Jr. Novice: Walk/Trot/Canter (No more than 7 to canter at once)

18. Jr. Novice: Cross rail course consisting of eight jumps, with four jumps taken twice. Riders may be asked to track left, right, or both directions at the judge's discretion.

END OF YEAR AWARD SPONSORED BY FOUR STAR RANCH

EQUITATION (Junior/Adult)

The following classes are open to juniors and amateurs unless otherwise noted.

Points are awarded to the rider regardless of the horse.

MAIDEN: Open to juniors and adults, not restricted by previous wins.

19. Maiden: Walk/Trot/Canter

20. Maiden: Over Fences 2' 3"

21. Maiden: Over Fences 2' 3"

END OF YEAR AWARDS SPONSORED BY: ELEMCO SOFTWARE

ALL AGE 2' EQUITATION: NES: Open to junior and adult riders who have not won a Grand or Reserve Championship in All Age EQ for 2 consecutive years.

22. All Age: Walk/Trot/Canter

23. All Age: Over Fences 2' with change of direction

24. All Age: Over Fences 2' with change of direction

END OF YEAR AWARD SPONSORED BY THE BARN

CHILD ADULT FLAT DIVISION: **Class is open to ALL and is not restricted by age or status.** Open to riders of any age on horses or ponies who wish to compete in a flat-only division. This division is ideal for older horses, green horses/riders, or those who prefer not to jump. Horse and rider combination cannot cross-enter into any divisions at this show other than pleasure.

50. Child/Adult Flat: Walk/Trot

51. Child/Adult Flat: Walk/Trot/Canter (No more than 7 to canter at once)

52. Child/Adult Flat: Equitation Pattern Riders will complete a basic pattern including elements such as circles, changes of direction, and transitions, as determined by the judge.

END OF YEAR AWARD SPONSORED BY MARY'S PIZZA & PASTA

ADULT EQUITATION

Points are awarded to the rider regardless of the horse.

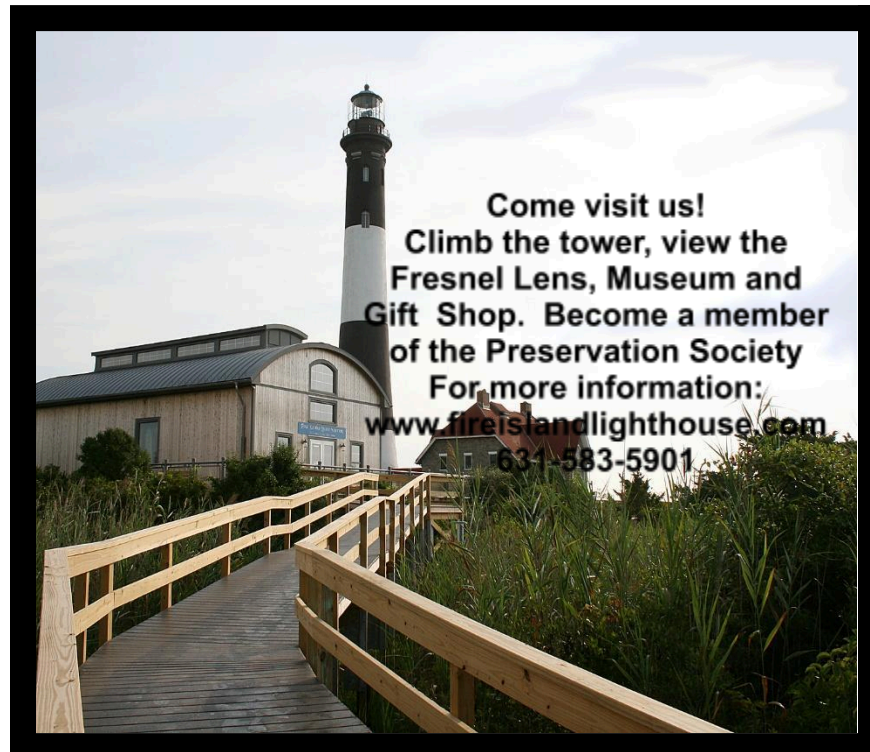
ADULT HUNT SEAT EQUITATION ADULT BEGINNER: NES: Open to riders who have not competed in any Open classes in any discipline. Participation is limited to two consecutive years, regardless of points earned. After two years, riders must move up to All-Age Equitation or any Open division. Riders may not cross-enter into All-Age 2' Equitation but may compete in Cross Rail Hunters.

25. Ad. Beginner: Walk/Trot

26. Ad. Beginner: Walk/Trot/Canter (No more than 7 to canter at once)

27. Ad. Beginner: X-Rail Course, consisting of 4 jumps, once around, tracking left. (trotting permitted)

END OF YEAR AWARDS SPONSORED BY: FIRE ISLAND LIGHTHOUSE



Come visit us!
Climb the tower, view the
Fresnel Lens, Museum and
Gift Shop. Become a member
of the Preservation Society
For more information:
www.fireislandlighthouse.com
631-583-5901

THUNDER HEARING SERVICES
www.thunderaudiology.com

LISA ROSELLI

OWNER; LICENSED NYS AUDIOLOGIST

450 WILLIAM FLOYD PKWY. Suite B. SHIRLEY, NY 11967
720 OLD COUNTRY RD. RIVERHEAD, NY 11901
517 LARKFIELD RD. EAST NORTHPORT, NY 11731

631-830-4296



**BULLSEYE
HORSE
TRANSPORT**

516-757-2571



**YOUR PREMIER NORTHEAST HORSE
TRANSPORTATION PARTNER.**

OUR SERVICES



Horse Shows



Private Charter

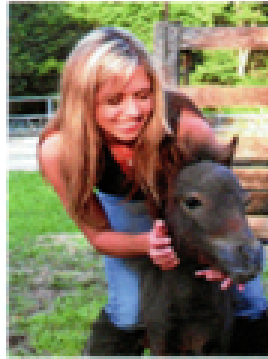


Track Moves

Get In Touch

✉ bullseyehorsetransport.com

✉ info@bullseyehorsetransport.com



Lil' Bit's Farm

Jenny Guzzi

"I have your dream horse."

- HORSE & PONY SALES
- TRAINING
- LESSONS

631.767.5517

JENNYGUZZI@GMAIL.COM

WWW.JENNYGUZZI.COM



Wishes everyone a Fun Show Season!

Baby Farm Animals • Summer Camps • Birthday Parties • Family Visits

****By Reservation Only!****

353 Manor Lane, Riverhead, NY 11901

631.566.1690

Instagram/Facebook thelittleredbarnNY • www.thelittleredbarnNY.com

Mary's Pizza & Pasta



Open 7 days a week
Take-out/Delivery
Daily Specials



www.maryspizzaandpasta.com



Seonk 631.801.6600

Islip Terrace 631.277.1590

Farmingdale 516.586.5917

Wantagh 516.557.2748

RUSTY / GAIL

(631) 698-2771



R & G HAULING INC.

Dependable ~ Hay & Shavings



You Call
We Haul

Family Owned
& Operated



A FULL EQUINE FACILITY

989 Connetquot Ave.
Central Islip, NY 11722

(631) 581-9477

Fax (631) 277-5995

MICHELLE MINIERI - CORDINGLEY

• LESSONS

• SUMMER CAMP

• BOARDING

• TACK SHOP

• HORSE SALES



Four Star Ranch



Horse back riding lessons, leasing and boarding

631-345-6324



Tony Caputo Horseshoeing

526 Middle Country Rd.
Middle Island, NY 11953

(631) 433-9027



*Good Luck To
All Riders In
2025!*

*Enjoy The Show!
Mary Jean
Baker*

ElemcoSoftware Integration Group

A FULL SOLUTION TECHNOLOGY PROVIDER

LOU MAGGIO
President

PO Box 1059 | Central Islip, NY 11722

Tel: 631.234.3099 | Cell: 516.805.0059

Email: lmaggio@elemcosoftware.com

www.elemcosoftware.com



SPECIALIZING IN SMALL TO MEDIUM SIZED BUSINESSES



MICHAEL J. BERGER AND CO., LLP
CERTIFIED PUBLIC ACCOUNTANTS

3425 VETERANS MEMORIAL HIGHWAY
SUITE B
ROCKY HILL, NEW YORK 11779



- ☒ **New Business Set Ups**
- ☒ **Accounting Auditing & Taxes**
- ☒ **IRS & NY State Tax Problems**
- ☒ **IRS Representation**
- ☒ **Tax & Estate Planning**
- ☒ **Projections Bookkeeping & Finance**
- ☒ **Management Advisory Services**
- ☒ **Work Done in Your Office or Ours**

Quality & Personalized Service

In Business over 46 Years

website: www.bergercpa.com

Phone: 631-471-3400

email: cpa@bergercpa.com



The **BARN**

PET FEED & SUPPLIES

315 BAY SHORE RD, DEER PARK NY 11729

(631) 940-5907

OPEN 7 DAYS A WEEK AND WE DELIVER!

HAY, SHAVINGS, EQUINE PELLET BEDDING,
STALL MATS, HORSE FEED, BUCKETS, GATES,
STRAW, CHICKEN FEED, DOG FOOD, CAT FOOD,
WILD BIRD SEED, ALL ANIMAL FEED & SUPPLIES

PROUDLY DISTRIBUTING



PURINA



**TROPLE
CROWN**



**DRAW
it OUT**

FOR MORE INFORMATION CHECK OUT OUR WEBSITE

WWW.THEBARNFEEDSTORE.COM



10% OFF YOUR FIRST DELIVERY

ORDER WITH US!

The **BARN**
PET FEED & SUPPLIES





Looking for a new way to enjoy your horse?
A mounted drill team is a group of horses
and riders performing choreographed
maneuvers to music. Drill teams are intended
to entertain, show sportsmanship,
horsemanship, team work and dedication.



All disciplines welcome, we only ask that you have
the confidence and know how to control your horse
(walk, trot, canter, back, etc). No drill team
experience necessary. Team training is provided!

**Practices are held at the Bohemia Equestrian
Center on Sycamore Avenue in Bohemia on
Wednesdays, 5:45 pm to 7:15 pm.**



Contact Denise Ryder for more infor-
mation. deniseryder411@gmail.com

Selling your home?
House hunting? Just
nosy? Either way you'll
want in! For all things
Long Island Scan the QR
code and sign up for my
News Letter!



JOIN THE
MONTHLY EDIT
NEWSLETTER



In your inbox, each month:

✉ **Exclusive local insights** (the kind you can't just Google).

🍴 **New restaurants and businesses** you'll want to check out.

📅 **Can't-miss events** to fill your calendar with fun.

🕵️ **Hidden gems and local secrets** worth knowing.

🏠 **Featured listings** you won't want to miss. (Because who doesn't love a little real estate eye candy?)

If you love staying connected to what's happening around town (and don't mind a few surprises along the way), join the list.

Call or text for **FREE** home value
& **FREE** Buyer consult

Mobile: 516-376-3598

Email : BiancaBowen@next-den.com

Website: www.BiancaSellsLongIsland.com

Scan to see my
reviews!





THE ONLY FULL SERVICE EQUINE
HOSPITAL ON LONG ISLAND



**CORNELL RUFFIAN
EQUINE SPECIALISTS**

- ✓ Emergency & Critical Care
- ✓ Lameness & Advanced Diagnostic Imaging
MRI, Bone Scan, Ultrasound, Radiography
- ✓ Dental Services
- ✓ Surgery - Orthopedic & Soft Tissue
- ✓ Regenerative Medicine

111 Plainfield Ave, Elmont NY 516-488-4510 CornellRuffian@Cornell.edu

VISIT OUR
WEBSITE TO
LEARN MORE



EQUINE & CANINE PHOTOGRAPHY

Website: abitoftimephotography.shootproof.com

Facebook: A Bit of Time Photography

Instagram: @abitoftimephotography

Call or text: 631-872-0625